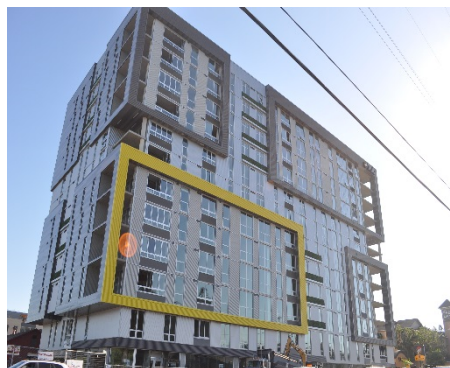


7/10/2015

JOHN HYLAND
CONSTRUCTION

EXECUTIVE SUMMARY REPORT



The Past Week

- South side sidewalk accent brick
- West side curb and gutter
- Exterior window washing
- Glass railings at terraces
- Pivot doors installed at Club Room
- Flooring at rooms affected by elevator hoist
- Carpet and base at corridors
- Misc. hardware on unit entry doors level 3
- Reception desk at Leasing Lobby
- Wood ceiling at Leasing Lobby

Coming Next Week

- Corridor carpet continues
- Flooring at rooms affected by elevator hoist continues
- Casework and countertops at rooms affected by elevator hoist continues
- Misc. door hardware continues
- Sidewalk forming and placing continues

Current Crew Size

Manpower: 126

Contractor	Scope	Personnel
John Hyland Const.	Vertical Concrete	8
Jet Electrical	Electrical	14
Jet Plumbing	Plumbing	14
Jet Heating	HVAC Duct	6
Jet Fire Prevention	Fire Sprinklers	2
Western Partitions	Metal Stud Framing/Sheet Rock	4
Third Generation Painting	Interior Paint	10
LJ Pearson	Interior Wood Trim	6
Arctic Sheet Metal	Weather Barrier	1
Dallas Glass	Window Installation	6
Paulsen's	Ceramic Tile	2
Umpqua Roofing	Roof Pavers and Traffic Coating	4
Lanz Cabinets	Casework	2
Thomas Kay	Flooring	6
Rexius	Landscaping and East sidewalk pavers	4
Blake	Countertops	4
ABT Appliances	Appliances	4
Iris	Roller Shades	2
Aqua	Cleaning	5
Knife River	Crosswalk	14
Dynasty Concrete	Water Filtration Planter	6
Anderson Pools	Swimming Pool / Hot Tubs	2



Reception desk
installation at Leasing
Lobby



Reception desk installed
at Leasing Lobby



Hoisting Club Room pivot doors into the building



An army of installers lift the pivot doors into place at the Club Room.



Pivot door installation
complete at Club Room



Glass railing installation at
level 3 terrace

West sidewalk forming



South sidewalk with
accent brick installed

