

6/19/2015

JOHN HYLAND
CONSTRUCTION

EXECUTIVE SUMMARY REPORT



The Past Week

- South side sidewalk curb and gutter
- Traffic coating at terraces
- Exterior window washing
- Metal panels at West elevation
- Wood doors, trim, and painting at rooms affected by elevator hoist
- Ceramic tile level 12 kitchens
- Countertops level 12
- Flooring level 11
- Accessories level 11
- Wood plank walls at level 2 corridor and Club Room
- Coiling door at parking garage entrance

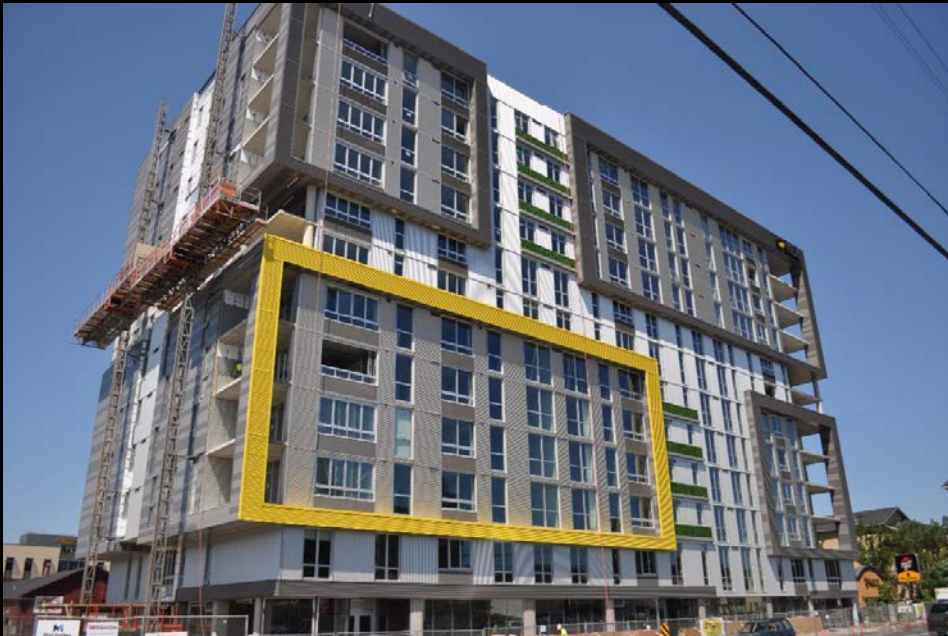
Coming Next Week

- Tile at level 2 Public Restrooms
- Flooring level 12
- Accessories level 11 continues
- Paint at level 1 Leasing
- Traffic coating at terraces continues

Current Crew Size

Manpower: 141

Contractor	Scope	Personnel
John Hyland Const.	Vertical Concrete	8
Jet Electrical	Electrical	12
Jet Plumbing	Plumbing	18
Jet Heating	HVAC Duct	6
Jet Fire Prevention	Fire Sprinklers	2
Western Partitions	Metal Stud Framing/Sheet Rock	6
Third Generation Painting	Interior Paint	12
LJ Pearson	Interior Wood Trim	6
Arctic Sheet Metal	Weather Barrier	12
Dallas Glass	Window Installation	6
Paulsen's	Ceramic Tile	8
Umpqua Roofing	Roof Pavers and Traffic Coating	4
Lanz Cabinets	Casework	4
Thomas Kay	Flooring	6
Rexius	Landscaping and East sidewalk pavers	2
Blake	Countertops	4
ABT Appliances	Appliances	2
Iris	Roller Shades	2
Aqua	Cleaning	5
Knife River	Crosswalk	8
Dynasty Concrete	Water Filtration Planter	6
Sun Scaffolding	Fraco Removal	2



South elevation complete
with Fraco scaffold
removed



Metal panels nearly
complete at West
elevation



Wood plank walls at level 2 amenities corridor



Completed wood plank walls at level 2 amenities corridor



Trex installation at radius tree bench in Courtyard



Heating up Trex decking for radius bending

Curb and gutter placed at
South sidewalk



Aluminum storefront
install at level 2 Retail
space

