

5/1/2015

JOHN HYLAND
CONSTRUCTION

EXECUTIVE SUMMARY REPORT



The Past Week

- Roof Pavers
- Roof landscaping
- Glass railings at roof parapet
- Planters and benches at courtyard
- Corrugated metal panels at South elevation
- Drywall level 12
- Drywall taping level 11
- Wood doors, casing, trim level 11
- Painting level 10
- Ceramic tile level 10
- Casework level 9
- Accessories level 7
- Appliance installation levels 5 & 6

Coming Next Week

- Construction elevator removal
- Drywall install level 12 continues
- Drywall taping level 12
- Wood doors and trim level 11 continues
- Paint level 10 continues
- Ceramic tile level 10
- Casework level 9 continues
- Accessories level 8

Current Crew Size

Manpower: 208

Contractor	Scope	Personnel
John Hyland Const.	Vertical Concrete	12
Cascade Tower Crane	Crane Operator	1
Jet Electrical	Electrical	25
Jet Plumbing	Plumbing	21
Jet Heating	HVAC Duct	8
Jet Fire Prevention	Fire Sprinklers	3
Western Partitions	Metal Stud Framing/Sheet Rock	35
Third Generation Painting	Interior Paint	12
LJ Pearson	Interior Wood Trim	8
Arctic Sheet Metal	Weather Barrier	16
Dallas Glass	Window Installation	6
Paulsen's	Ceramic Tile	10
Umpqua Roofing	Roofing	8
Lanz Cabinets	Casework	4
Thomas Kay	Flooring	6
Rexius	Landscaping	8
Blake	Countertops	4
ABT Appliances	Appliances	6
Sun Scaffold	Scaffolding	1
Iris	Roller Shades	2
Aqua	Cleaning	6
Haps Masonry	North Terrace CMU	6



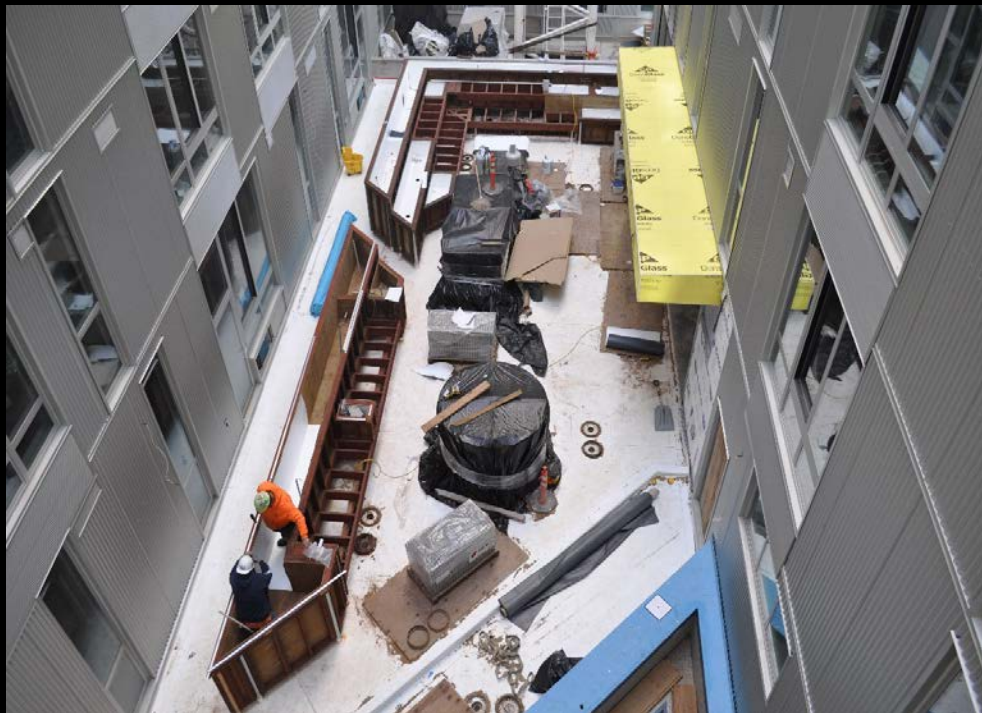
Yellow bump out at
South elevation



East elevation with
scaffolding removed



North elevation with
scaffolding removed



Overall progress at
courtyard



Planter and bench
framing at courtyard



Planter and bench
framing at courtyard



Roof landscaping



Hallway at fitness center