

10/20/2014



JOHN HYLAND
CONSTRUCTION

EXECUTIVE SUMMARY REPORT



The Past Week

Placed level 10 east slab on deck walls and columns underway, continue with MEP and reinforcement level 10 west. Fire sprinkler installation continues level 3. HVAC ductwork continues level 2 and 3. Exterior framing/dens-glass continues levels 5 level 6 framing underway. Weather barrier continues level 2, window flashing installation underway. Windows arrived for level 2. Interior framing continues levels 4 and starting on level 5. Ceiling framing continues level 3. Plumbing rough in continues levels 2 and 3. Electrical rough-in continues level 3 and started on level 4. Construction elevator raised to serve up to level 8.

Coming Next Week

Complete level 10 slab on deck and walls and columns level 10 to 11. Raise slab on deck tables from level 10 east to level 11. Weather barrier and window flashing to continue level 2-3. Exterior framing and Dens-glass to complete level 6. Interior framing complete level 4 continue level 5. Ductwork and fire sprinklers to continue level 3. Electrical rough in to complete 4 move to level 5. Plumbing testing level 2 and 3 start level 4.

Current Crew Size

Manpower: 161

Contractor	Scope	Personnel
John Hyland Const.	Vertical Concrete	14
Cascade Tower Crane	Crane Operator	1
CECO	Slab on deck formwork	12
Jet Electrical	Electrical	12
Jet Plumbing	Plumbing	18
Jet Heating	HVAC Duct	7
Jet Fire Prevention	Fire Sprinklers	7
R2M2	Concrete Reinforcement	11
Roberts Surveying	Building Control	2
Western Partitions	Metal Stud Framing	34
Sun Scaffold	Hydraulic Scaffold	1
West Side Iron	Steel Stair Installation	3
Dynasty	Concrete Finishers	15
Hap's Masonry	Interior CMU	1
LJ Pearson	HM Door Frame Install	2
Arctic Sheet Metal	Weather Barrier	10
Dallas Glass	Window Installation	6
McDonough Elevators	Construction Hoist	5



West elevation,
construction hoist
installed to level 8.



Windows on site stored
on level 1 parking garage.



Level 1 parking garage
looking north east down
ramp to basement, CMU
walls complete.



Window flashing and
weather barrier level 2
south elevation



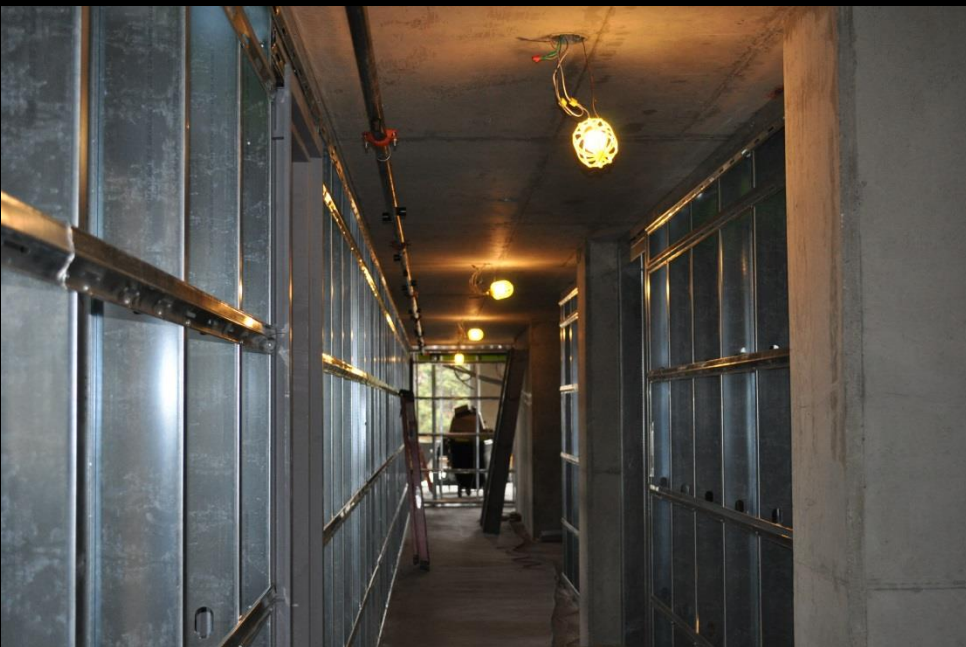
Level 3 unit rough in



Level 3 unit entry door on
the left ceiling framing
and rough in complete



Level 4 north side of the building looking west, pre-rock complete at ceilings and electrical rough in underway.



Level 4 fire sprinkler main installation complete



Level 5 south exterior wall framing complete.



Level 5 north side of building view to the west, interior framing underway with ceiling track installed ready for wall studs.



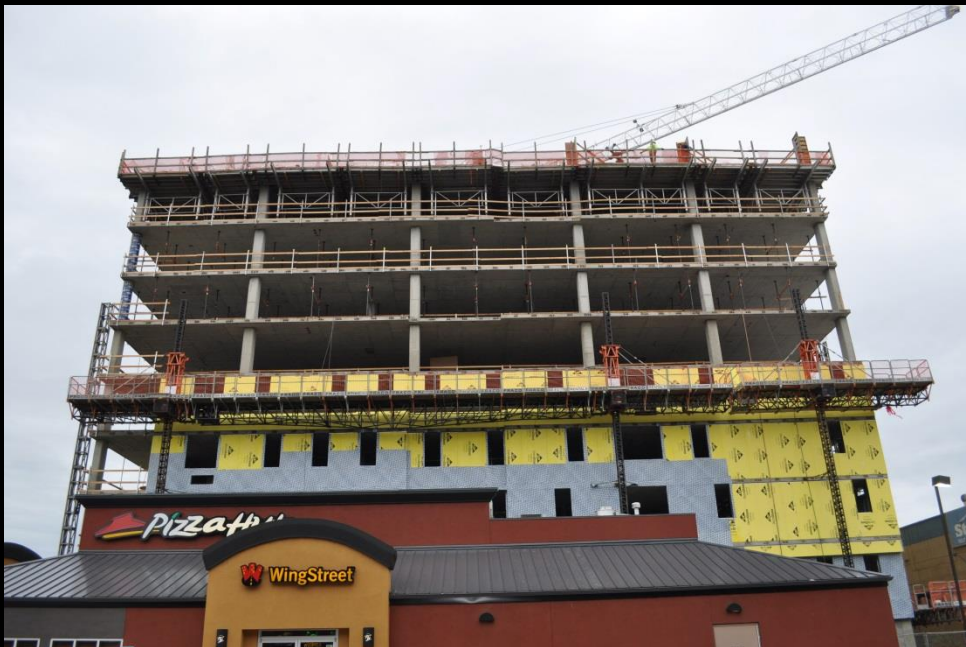
Level 6 exterior framing underway



Level 6 south west corner interior and exterior studs on site.



Level 10 mansion unit at south east corner views to the north east, east and south.



East elevation, exterior Dens-glass to level 5, weather barrier in progress



Two blocks west of the project view to the east.



Southeast of the project view to the northwest