

11/13/2014



JOHN HYLAND
CONSTRUCTION

EXECUTIVE SUMMARY REPORT



The Past Week

Placed level 12 east, walls and columns underway and continue reinforcement for level 12 west. Exterior framing/dens-glass continues level 7 and 8. Weather barrier continues levels 6-7; window flashing installation continues level 3, 4, and 5. Window installation continues levels 3, 4 and 5. Interior framing complete levels 6, continues on level 7. Ceiling framing continues level 6. Fire sprinkler installation continues level 5 and 6. HVAC ductwork continues level 4 and 5. Plumbing continue with rough in level 4 and 5. Electrical rough in continues level 4 and 5.

Coming Next Week

Complete level 12 slab on deck west and all level 12 walls and columns. Move tables up for roof deck east. Weather barrier to continue levels 6 and 7, window flashing to continue level 5 and 6. Window installation to continue level 4 and 5. Exterior framing and Dens-glass to complete level 8 and continue on level 9. Interior framing will continue level 7 and start level 8. Ductwork and fire sprinklers to continue level 4 and 5 and 6. Electrical rough to continue level 5 and 6. Plumbing continue on level 5 and 6.

Current Crew Size

Manpower: 184

| Contractor | Scope | Personnel |
|---------------------|--------------------------|-----------|
| John Hyland Const. | Vertical Concrete | 18 |
| Cascade Tower Crane | Crane Operator | 1 |
| CECO | Slab on deck formwork | 12 |
| Jet Electrical | Electrical | 16 |
| Jet Plumbing | Plumbing | 26 |
| Jet Heating | HVAC Duct | 12 |
| Jet Fire Prevention | Fire Sprinklers | 6 |
| R2M2 | Concrete Reinforcement | 11 |
| Roberts Surveying | Building Control | 2 |
| Western Partitions | Metal Stud Framing | 35 |
| Sun Scaffold | Hydraulic Scaffold | 2 |
| West Side Iron | Steel Stair Installation | 4 |
| Dynasty | Concrete Finishers | 15 |
| LJ Pearson | HM Door Frame Install | 2 |
| Arctic Sheet Metal | Weather Barrier | 14 |
| Dallas Glass | Window Installation | 8 |



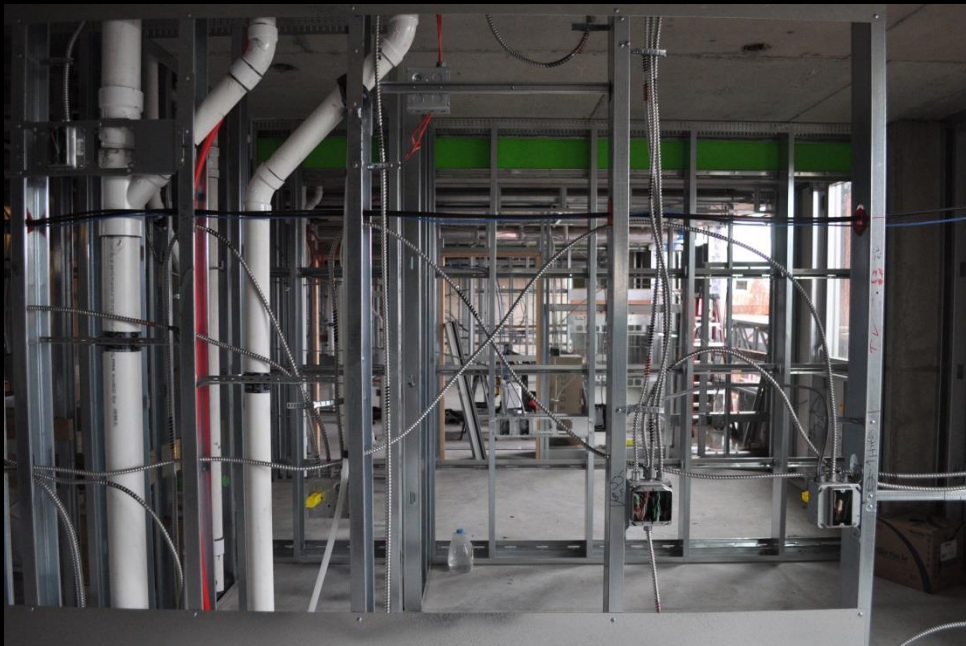
level 1 transformer room.



level 2 stair 1.



Window caulking level 3



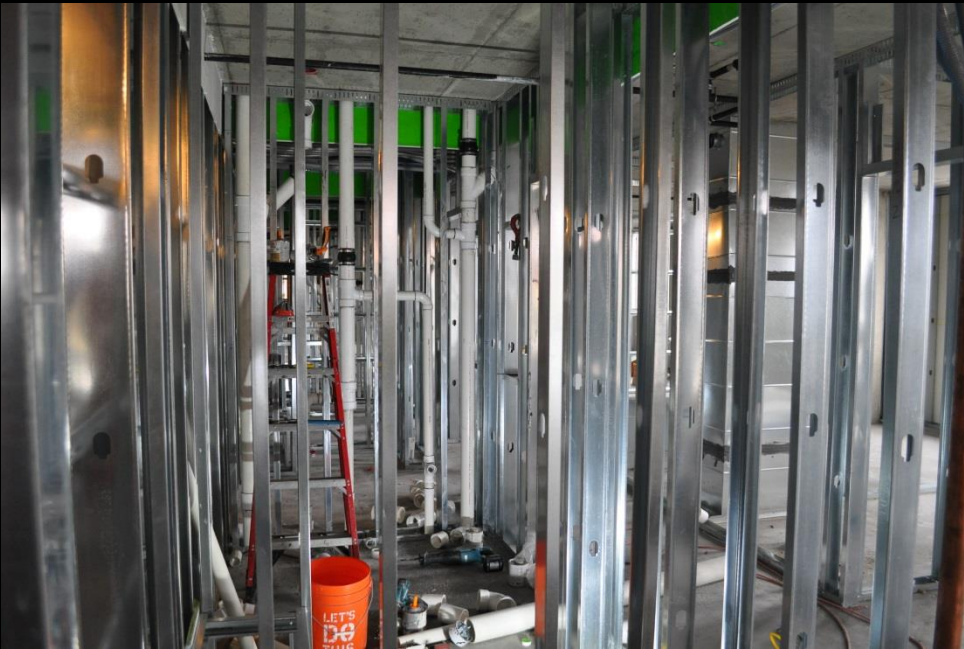
rough in level 4



rough in level 5



Elevator shaft steel
installation level 5



Level 5 plumbing rough in



Level 6 east side of
elevator looking north



Level 7 north side of the building view to the west interior framing underway.



Level 8 north side of the building looking west exterior framing underway.



Level 12 north east corner
looking west. Installing
column reinforcement.



level 12 pool support
beam formwork and
reinforcement